

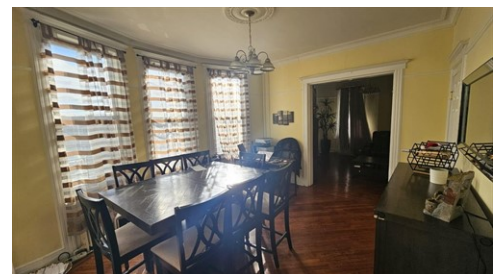


\$ 899,999



32 Claremont Ave, Jersey City, NJ 07305

- » Beds: 8 | Baths: 3 Full
- » MLS #: 240001105
- » Multi-Family
- » More Info: 32ClaremontAve.Listing.Site



Meenakshi Sharma
Suraj Sharma
(201) 401-7516 (Mobile)
(646) 477-5862 (Mobile)
meenablvd@gmail.com
<http://www.Davesarmg.com>

kW
KELLERWILLIAMS®

Keller Williams Greater Brunswick
220 Davidson Ave. Suite 404
Somerset, NJ 08873
(908) 751-7750

Remarks

Welcome to 32 Claremont Ave, a meticulously restored Victorian gem that presents a lucrative opportunity for both savvy investors and discerning primary buyers looking to enjoy the benefits of passive income. This exquisite 3-family residence stands proudly on an above-standard lot, measuring an impressive 36x100 feet. Boasting a generous 4, 660 square feet of interior space, this spacious home is a solid income-producing property with a compelling CAP rate. The well-designed layout includes three separate units, each with ample living space and thoughtful features to attract tenants. The property's financial appeal is further enhanced by a large basement offering four private storage rooms. Currently, the garage and two additional storage rooms in the basement are already generating income, renting at a rate of \$250. The garage also provides extra open storage space. Practicality meets convenience with separate utilities for each unit, ensuring a hassle-free and efficient management structure. Hardwood floors grace all three units, providing a timeless and elegant aesthetic throughout. In-unit washer/dryers add a modern touch of convenience, while the first and third-floor units are equipped with dishwashers for added ease. Step outside and discover a large paved

